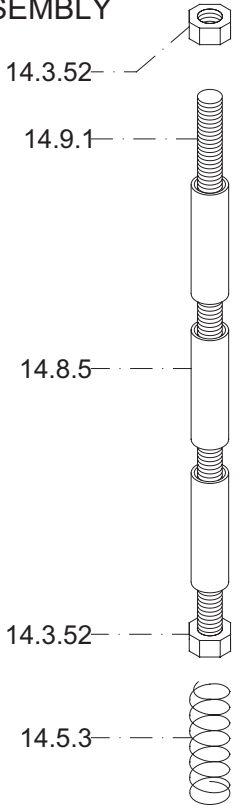
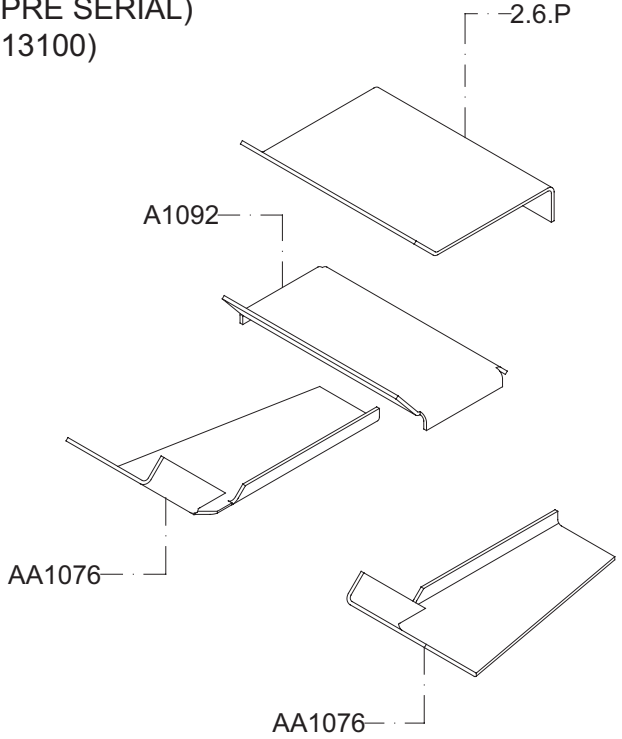


REPLACEMENT PARTS			
DESCRIPTION	NEW CODE	OLD CODE	PRICE
Top louver fin (black)	10.01.NPR	A959	10.00
Top louver fin (gold)	10.11.NPR		30.00
Top louver fin (pewter)	10.21.NPR		30.00
Louver hardware assembly	99.10.01.P		15.00
Retention spring for louvers	14.5.3	R6309	P/A
Nut 1/4-20 Hex	14.3.52	R1415	P/A
Louver rod	14.9.1	R6416	P/A
Spacer 1/4" X 1 3/8"	14.8.5	R6149	P/A
Black door set	FDDDB		400.00
Gold door set	FDDDG		800.00
Pewter door set	FDDDP		800.00
Hinge pin	14.17.15	R6410	10.00
Nut 5/16"	14.3.70	R1426	P/A
Chrome cap for Opel doors	14.17.43	R6271	3.00
Radiation fire shield	9.9.P	A990	5.00
Glass retaining bracket	9.7.DP	A975	4.00
Glass gasket	14.10.2	R7002	10.00
Gasket replacement kit	FDGRK2		25.00
Door gasket (5/8)	14.10.3	R7005	P/A
Door gasket (1/4)	14.10.5	R7009	P/A
Door handle assembly (left)	99.09.02.P		15.00
Door handle (left)	1.9.2.P	A970A	10.00
Door handle grip (wood)	14.6.1	R6012	5.00
Washer	14.2.81	R1321P	P/A
Locknut 2-way	14.3.83	R1324	P/A
Door handle assembly (right)	99.09.01.P		20.00
Door handle (right)	1.9.3.P	A971A	10.00
Door handle spacer	14.17.30	R6426	P/A
Door closer pawl	14.17.31	A1283	5.00
Door handle grip (wood)	14.6.1	R6012	5.00
Washer	14.2.83	R1321P	P/A
Locknut 2-way	14.3.83	R1324	P/A
Black door set including glass	FDDDBO		550.00
Gold door set including glass	FDDGO		950.00
Pewter door set with glass	FDDPO		950.00
includes FDDDB, FDDG, FDDP			P/A
Ceramic glass	14.7.2	A974/R6257/9-9.8.P	150.00
Log retainer	13.LR.1.P	AA1142W	25.00
Metal baffle assembly	99.02.01.P		80.00
Flame shield	2.6.P	AA1071	25.00
Baffle for non-cat		A1092	25.00
Baffle supports (2)		AA1076	50.00
Smoke baffle	11.6.P	8.1.P - A1092	50.00
Refractory complete set	99.11.02.P		130.00
Back left refractory	11.1.P	R4103	30.00
Back right refractory	11.2.P	R4104	30.00
Side front left refractory	11.3.P	R4105	35.00
Side front right refractory	11.4.P	R4106	35.00
Back side left refractory	11.5.P	R4107	35.00
Back side right refractory	11.13.P	R4108	35.00
Draft control gasket	7.2.DNP	A989	4.00
Draft control assembly	1.7.5.DP	A985	130.00
Primary air screen	7.9.P	A942-2	25.00
Secondary air tube	7.8.P	A1137	55.00
Draft control lever	4.1.DNP	A953W	10.00
Spring	14.5.6	R6307	2.00
Draft control knob	14.6.2	R6000	4.00
Chain and pendant assembly	99.06.01.P		10.00
Chain # 10	14.17.3	R6110	P/A
Detachable pendant	14.17.4	R6121	P/A
Terminal block assembly	99.12.01.P		25.00
Terminal block	1.12.1.DNPR	AA1088W	P/A
Terminal block cover	12.2.DNPR	AA1089	P/A
Top nailing strip	6.10.P	A945	N/A
Side nailing strip	6.11.P	A944	N/A
NOT AVAILABLE PART OF ASSEMBLY			N/A P/A

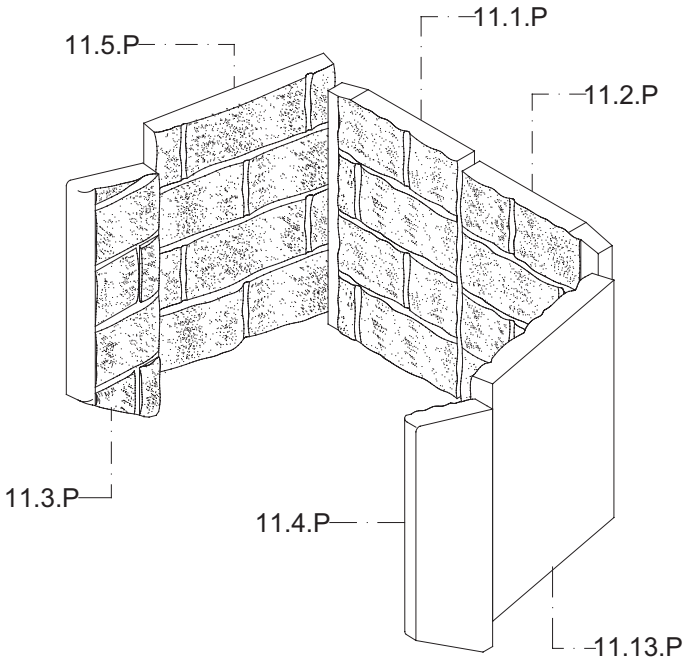
99.10.01.P
LOUVER
HARWARE
ASSEMBLY



99.02.01.P
METAL BAFFLE
ASSEMBLY
(PRE SERIAL)
(13100)



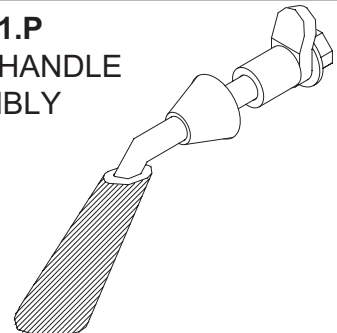
99.11.02.P
REFRACTORY
COMPLETE SET



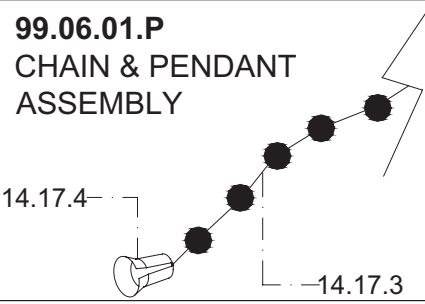
99.09.02.P
LEFT HANDLE
ASSEMBLY



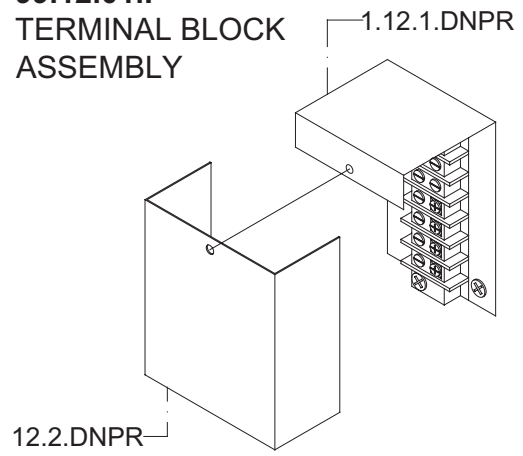
99.09.01.P
RIGHT HANDLE
ASSEMBLY



99.06.01.P
CHAIN & PENDANT
ASSEMBLY



99.12.01.P
TERMINAL BLOCK
ASSEMBLY



REPLACEMENT PARTS

DESCRIPTION	NEW CODE	OLD CODE	PRICE
Top louver fin (black)	10.01.NPR	A959	10.00
Top louver fin (gold)	10.11.NPR		30.00
Top louver fin (pewter)	10.21.NPR		30.00
Louver hardware assembly	99.10.01.P		15.00
Retention spring for louvers	14.5.3	R6309	P/A
Nut 1/4-20 Hex	14.3.52	R1415	P/A
Louver rod	14.9.1	R6416	P/A
Spacer 1/4" X 1 3/8"	14.8.5	R6149	P/A
Black door set	FDDDB		400.00
Gold door set	FDDDG		800.00
Pewter door set	FDDDP		800.00
Hinge pin	14.17.15	R6410	10.00
Nut 5/16"	14.3.70	R1426	P/A
Chrome cap for Opel doors	14.17.43	R6271	3.00
Radiation fire shield	9.9.P	A990	5.00
Glass retaining bracket	9.7.DP	A975	4.00
Glass gasket	14.10.2	R7002	10.00
Gasket replacement kit	FDGRK2		25.00
Door gasket (5/8)	14.10.3	R7005	P/A
Door gasket (1/4)	14.10.5	R7009	P/A
Door handle assembly (left)	99.09.02.P		15.00
Door handle (left)	1.9.2.P	A970A	10.00
Door handle grip (wood)	14.6.1	R6012	5.00
Washer	14.2.81	R1321P	P/A
Locknut 2-way	14.3.83	R1324	P/A
Door handle assembly (right)	99.09.01.P		20.00
Door handle (right)	1.9.3.P	A971A	10.00
Door handle spacer	14.17.30	R6426	P/A
Door closer pawl	14.17.31	A1283	5.00
Door handle grip (wood)	14.6.1	R6012	5.00
Washer	14.2.83	R1321P	P/A
Locknut 2-way	14.3.83	R1324	P/A
Black door set including glass	FDDDBO		550.00
Gold door set including glass	FDDGO		950.00
Pewter door set with glass	FDDPO		950.00
includes FDDDB, FDDG, FDDP			P/A
Ceramic glass	14.7.2	A974/R6257/9-9.8.P	150.00
Log retainer	13.LR.1.P	AA1142W	25.00
Metal baffle assembly	99.02.01.P		80.00
Flame shield	2.6.P	AA1071	25.00
Baffle for non-cat		A1092	25.00
Baffle supports (2)		AA1076	50.00
Smoke baffle	11.6.P	8.1.P - A1092	50.00
Refractory complete set	99.11.02.P		130.00
Back left refractory	11.1.P	R4103	30.00
Back right refractory	11.2.P	R4104	30.00
Side front left refractory	11.3.P	R4105	35.00
Side front right refractory	11.4.P	R4106	35.00
Back side left refractory	11.5.P	R4107	35.00
Back side right refractory	11.13.P	R4108	35.00
Draft control gasket	7.2.DNP	A989	4.00
Draft control assembly	1.7.5.DP	A985	130.00
Primary air screen	7.9.P	A942-2	25.00
Secondary air tube	7.8.P	A1137	55.00
Draft control lever	4.1.DNP	A953W	10.00
Spring	14.5.6	R6307	2.00
Draft control knob	14.6.2	R6000	4.00
Chain and pendant assembly	99.06.01.P		10.00
Chain # 10	14.17.3	R6110	P/A
Detachable pendant	14.17.4	R6121	P/A
Terminal block assembly	99.12.01.P		25.00
Terminal block	1.12.1.DNPR	AA1088W	P/A
Terminal block cover	12.2.DNPR	AA1089	P/A
Top nailing strip	6.10.P	A945	N/A
Side nailing strip	6.11.P	A944	N/A

NOT AVAILABLE
PART OF ASSEMBLY

N/A
P/A



ASSEMBLIES

OPEL-2000